

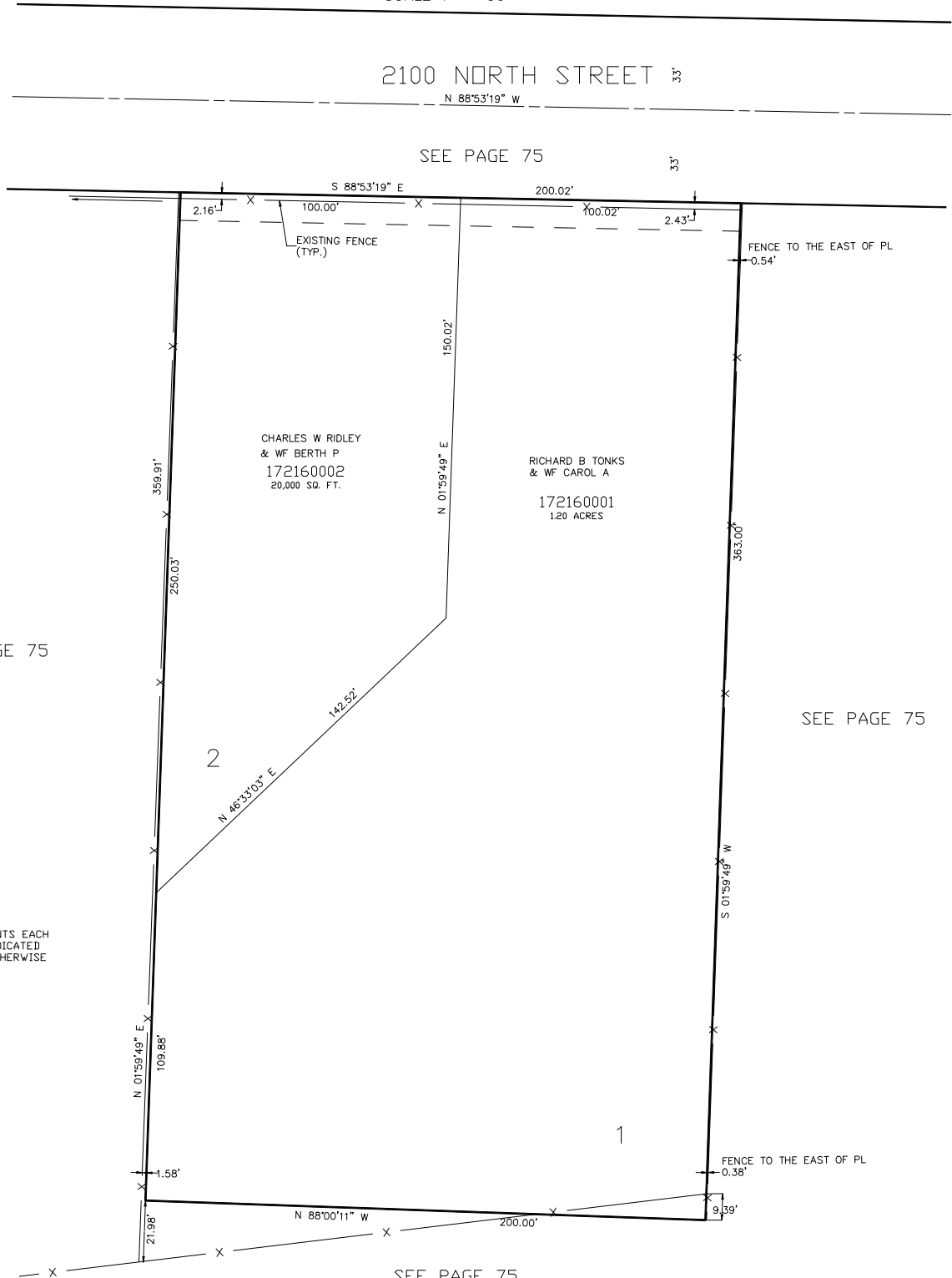
PART OF THE S.E. 1/4, OF SEC. 33, T.7N., R.1W., S.L.B. & M.

TONKS SUBDIVISION

TAXING UNIT: 10

IN NORTH OGDEN CITY

SCALE 1" = 30'



FOR COMPLETE ENG DATA SEE
ORIGINAL DEDICATION PLAT IN
BOOK 45, PAGE 91 OF RECORDS.

10' UTILITY & DRAINAGE EASEMENTS EACH
SIDE OF PROPERTY LINES AS INDICATED
BY DASHED LINES EXCEPT AS OTHERWISE
SHOWN.